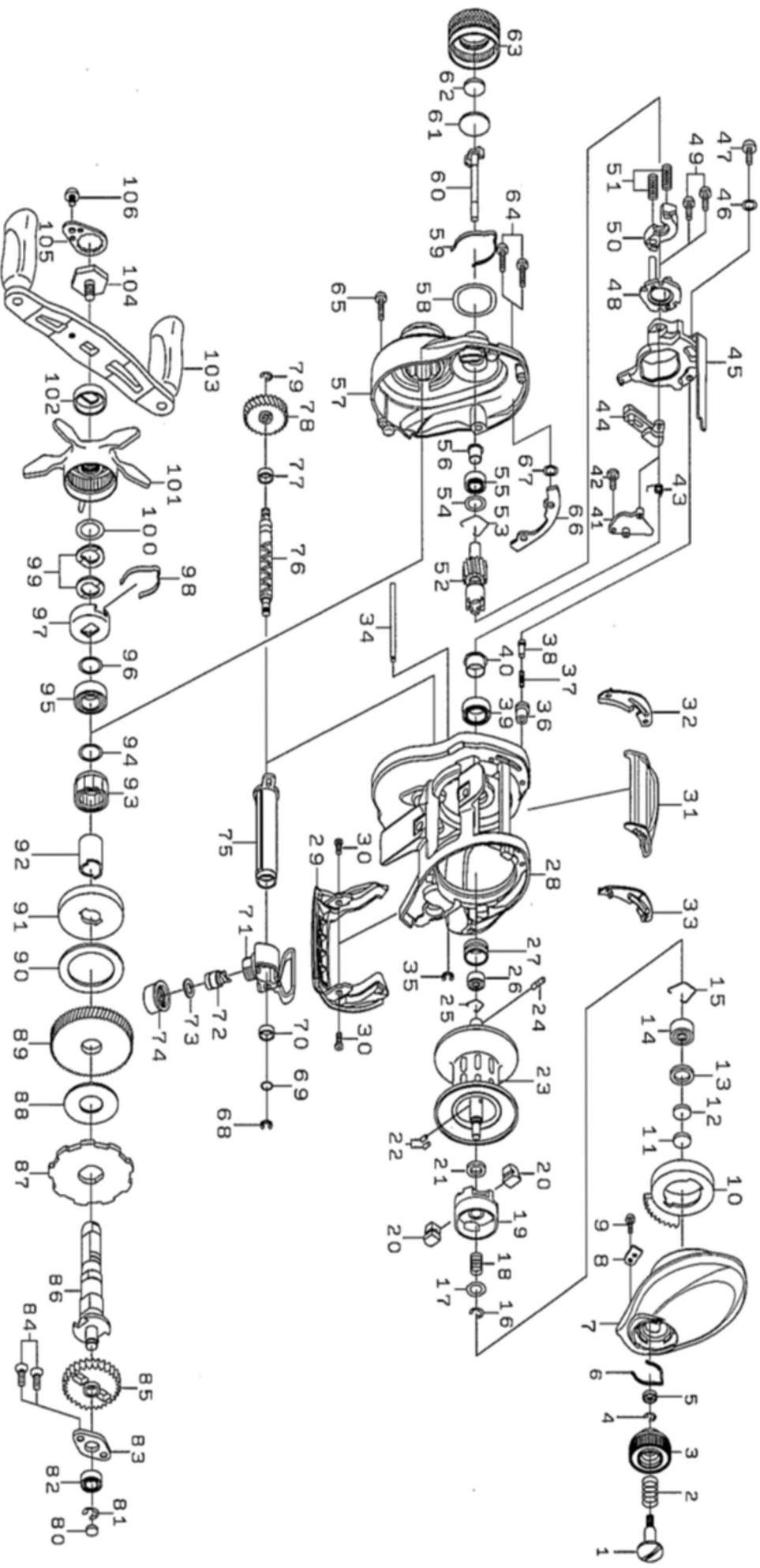




Please quote by part number, not key number when ordering
spares@daiwaaustralia.com.au PH: 02 8644 8644
ZILLION TW HLC 1514SHL



ZILLION TW HLC 1514SHL



Please quote by part number, not key number when ordering
 spares@datwaaustralia.com.au PH: 02 8644 8644
ZILLION TW HLC 1514SHL

Key No.	Part Number	Description	Key No.	Part Number	Description	Key No.	Part Number	Description
1	6H930401	BRAKE DIAL SCREW	36	6H910601	CLUTCH CAM PLATE PIN SPRING COLLAR	71	6J176602	LEVEL WIND
2	6E167101	BRAKE DIAL SPRING	37	6H928801	CLUTCH CAM PLATE PIN SPRING	72	6.12E+07	PAWL
3	6J045414	BRAKE DIAL	38	6J055201	CLUTCH CAM PLATE PIN	73	63731300	PAWL WASHER
4	6B339801	BRAKE DIAL RETAINER(A)	39	6G431002	CLUTCH CAM BALL BEARING	74	6F402801	PAWL HOLDER NUT
5	6F637701	BRAKE DIAL COLLAR	40	6H266601	CLUTCH CAM BEARING COLLER	75	6H944601	WORM SHIELD
6	6H663401	BRAKE DIAL LEAF SPRING	41	6H944301	KICK LEVER PLATE (A)	76	6H911702	WORM SHAFT
7	6J265902	RS PLATE	42	6H294101	KICK LEVER PLATE (A) SCREW	77	6G720001	WORM SHAFT COLLAR
8	6H915501	BRAKE DIAL RETAINER(B)	43	6H473301	KICK LEVER SPRING	78	6H910501	WORM SHAFT GEAR
9	6G939301	BRAKE DIAL RETAINER(B)SCREW	44	6J221501	KICK LEVER	79	6B339801	WORM SHAFT GEAR RETAINER
10	6J045701	MAGNET HOLDER	45	6H944001	CLUTCH CAM PLATE	80	6G099800	GEAR SHAFT WASHER
11	63757400	RS BALL BEARING WASHER(A)	46	6H159201	CLUTCH CAM PLATE SCREW WASHER	81	63208002	GEAR SHAFT RETAINER
12	63757411	RS BALL BEARING WASHER(B)	47	63522501	CLUTCH CAM PLATE SCREW	82	6G538007	GEAR SHAFT BALL BEARING
13	6G185101	RS BALL BEARING WASHER(C)	48	6H659101	KICK LEVER PLATE (B)	83	6H928901	GEAR SHAFT PLATE
14	6G511506	RS BALL BEARING	49	6B032904	KICK LEVER PLATE (B) SCREW	84	6E134509	GEAR SHAFT PLATE SCREW
15	6F032201	RS BALL BEARING RETAINER	50	6H944401	CLUTCH PLATE	85	6H912701	WORM GEAR
16	63208202	SPOOL HOLDER SPRING RETAINER	51	6J055301	CLUTCH SPRING	86	6J044702	GEAR SHAFT
17	6G150301	SPOOL HOLDER SPRING WASHER	52	62021828	PINION + DRIVE GEAR SET	87	6H929401	RATCHET
18	6J373401	SPOOL HOLDER SPRING	53	6H160801	PINION RING	88	6J085101	DRIVE GEAR WASHER
19	6J373301	SPOOL HOLDER	54	6J073501	PINION BEARING WASHER	89	62021828	PINION + DRIVE GEAR SET
20	6G360901	SPOOL HOLDER COLLER	55	6J019301	PINION BALL BEARING (MAG BEARING)	90	6H452602	DRAG WASHER
21	6E096501	SPOOL HOLDER WASHER	56	6H159502	PINION BEARING COLLER	91	6H913201	DRAG DISC WASHER
22	6H665301	SPOOL HOLDER PIN	57	6J373601	LS PLATE	92	6J377801	DRAG COLLAR
23	62022967	SPOOL ASSEMBLY(16-27)	58	6H157002	MECHANICAL BRAKE O-RING	93	6G819801	ONWAY CLUTCH
24	6H358801	SPOOL PIN	59	6H160901	MECHANICAL BRAKE SPRING	94	6B553802	CLUTCH RING WASHER
25	6J149501	SPOOL BEARING RING	60	6H159601	PINION SHAFT	95	6G431002	HANDLE BALL BEARING
26	6G511506	SPOOL BALL BEARING	61	6H161001	MECHANICAL BRAKE WASHER (B)	96	6F366802	HANDLE BEARING WASHER
27	6H232201	SPOOL BEARING COLLER	62	6B175503	MECHANICAL BRAKE WASHER (C)	97	6F028203	DRAG HOLDER
28	6J061608	FRAME	63	6J097404	MECHANICAL BRAKE KNOB	98	6F032401	DRAG HOLDER LEAF SPRING
29	6J045204	FRONT COVER	64	6G040822	LS PLATE SCREW (A)	99	6J508901	STAR DRAG SPRING WASHER
30	6H455407	FRONT COVER SCREW	65	6G040821	LS PLATE SCREW (B)	100	6H929501	STAR DRAG
31	6J101601	CLUTCH LEVER	66	6J044505	GUARD PLATE	101	6H694106	STAR DRAG WASHER
32	6H915701	CLUTCH LEVER PLATE (R)	67	6H770601	GUARD PLATE O-RING	102	6F850401	HANDLE CLER
33	6H915601	CLUTCH LEVER PLATE (L)	68	63205901	WORM SHAFT RETAINER	103	6J372801	HANDLE ASSEMBLY
34	6H912101	OSCILLATING POST	69	6B411700	WORM SHAFT WASHER	104	6G779101	HANDLE SCREW
35	6H704101	OSCILLATING POST RETAINER	70	6G720001	WORM SHAFT COLLAR	105	6H834507	HANDLE LOCK PLATE
							63538301	HANDLE LOCK PLATE SC